



I N S T R U M E N T S

**Part Number DP10010
1966-77 Ford Bronco Direct Fit Digital Dash Panel**

Instructions

KIT COMPONENTS

One (1) Bronco Digital Panel
One (1) Lens
One (1) O-ring Panel Gasket
One (1) Water Temperature Sending Unit
One (1) Oil Pressure Sending Unit
One (1) Ford Speedometer Sensor
One (1) 8' Shielded Speedometer Cable
One (1) Momentary Switch

WIRING INSTRUCTIONS

Connect the **BLACK** ground wire directly to the engine block.

Connect the **RED** wire to a switched +12 volt source (ignition switch).

Connect the **PURPLE** wire to the headlight switch to dim the LEDs 50% when the headlights are on. However, do not connect to the headlight rheostat control wire, the dimming feature will not work properly.

There are two (2) 18-gauge **WHITE** wires, one for the Left Turn Signal and one for the Right Turn Signal. Each wire is labeled on the printed circuit board as "LTURN" and "RTURN". Connect the **LTURN WHITE** wire to the left turn indicator circuit. Connect the **RTURN WHITE** wire to the right turn indicator circuit.

Connect the **BROWN** wire to the high beam circuit.

Disconnect the wire from the existing oil pressure sending unit and remove the sender. Insert the Nordskog oil pressure sending unit in place of the original pressure sender. Connect the **ORANGE** wire on the Nordskog dash panel to one of the posts (either one) on the new pressure sending unit. Connect the other post on the new sending unit to a suitable engine block ground.

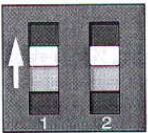
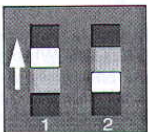
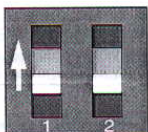
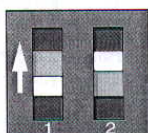
Disconnect the wire from the existing water temperature sending unit and remove the sender. Insert the new Nordskog water temperature sending unit in place of the original temperature sender. Do not use Teflon tape or other sealer on the new sending unit threads to avoid inaccurate temperature readings. Connect the **BLUE** wire on the Nordskog dash panel to the new temperature sending unit.

Disconnect the mechanical speedometer cable from the transmission and insert the new electronic sensor onto the transmission (see instructions included with the sensor).

Connect the **GRAY** wire from the digital panel to the **RED** wire in the 8' length of shielded cable included in the kit. Connect the **BLACK** wire and the **BARE** wire in the shielded cable together and connect to the **BLACK** wire on the dash panel. This cable shields the speedometer signal from electrical noise, which can interfere with the proper operation of the speedometer. Run the shielded cable from the dash panel to the speedometer sensor installed in the transmission. At the sensor end, connect the **RED** wire in the shielded cable to one of the **WHITE** wires (either one) on the sensor. Snip the end of the **BARE** wire in the shielded cable and do not attach it to anything (there should be no BARE wire extending outside the shielding). Connect the **BLACK** wire in the shielded cable to the other **WHITE** wire on the speedometer sensor.

Connect the **YELLOW** wire to the factory fuel sending unit. Use the 2-position DIPswitch on the back of the panel to select the type of sender you are using. Refer to the diagrams below to properly set the switch. The panel leaves the Nordskog factory preset for a Ford OEM fuel level sender.

Fuel Selector Switch Position

Manufacturer	Switch Position	Ohm Range (Empty to Full)
Ford/ Chrysler		73-10 OHM
GM		0-90 OHM
VDO		10-180 OHM
Universal/ Stewart Verner		240-33 OHM

Connect the **GREEN** wire on the Nordskog dash panel to the negative side of the coil. If you are using an aftermarket capacitive discharge ignition system, connect the **GREEN** wire to the "tach out" wire from the ignition box. **IMPORTANT:** Do not connect the **GREEN** wire to the coil if you are using an aftermarket CD ignition system!

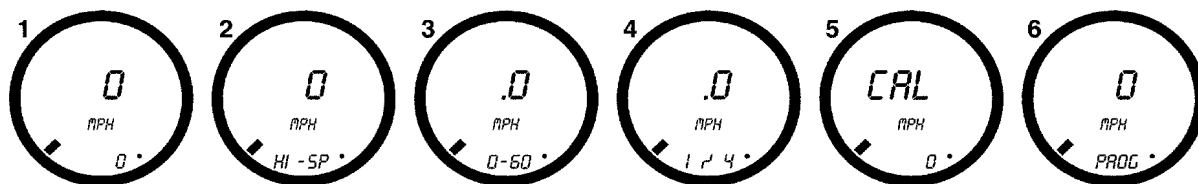
Connect the two thin (22-gauge) **WHITE** wires to the included toggle switch. This switch activates the different functions of the speedometer (see Instructions below).

The **PINK** wire is an **OPTIONAL** accessory indicator that will activate a red LED on the dash panel when supplied with +12 volts. Accessory examples include a Parking Brake indicator or 4 Wheel Drive indicator, but can be anything. Connect the **PINK** wire on the Nordskog dash panel to an existing wire controlling the desired accessory.

DIGITAL PERFORMANCE SPEEDOMETER

Your Nordskog dash panel is equipped with our Digital Performance Speedometer. This electronic speedometer displays speed and includes an odometer, trip meter, high-speed recall, 0-60 time and ¼ mile elapsed time (ET). It can be calibrated with the push of a button to adjust the gauge for different tire sizes, wheel sizes and gear ratios.

CALIBRATION



The speedometer leaves our factory with pre-set defaults, so you must recalibrate the gauge for your specific application. To accomplish this, locate a measured mile where you can safely start and stop your vehicle. By running the vehicle over this measured distance, the speedometer will learn the number of pulses output by the speedometer sensor during a specific measured distance. It will then use this acquired data to calibrate itself for accurate reading. There is a small recall pushbutton in the right hand corner of the gauge face used to calibrate and read all of the data stored in the speedometer.

After installing your speedometer according to the wiring instructions, with the ignition on it should immediately display the default screen (Fig. 1).

While stopped at the beginning of the measured mile with your vehicle running, press and hold the pushbutton until the odometer displays "HI-SP" (Fig. 2). On its own, the gauge will cycle through the recorded performance data in the following order: "0-60," "1/4," and "CAL." (Fig. 2 through 5). While "CAL" is being displayed, press the pushbutton one time. This will put the speedometer in Program Mode with "PROG" displayed in the odometer (Fig. 6). If you miss stopping the display at "CAL", simply repeat the steps). With "PROG" displayed, the speedometer is now waiting to record the pulse count data accumulated over the measured mile.

When you are ready to begin driving, press the pushbutton once. The speedometer will display "CAL" and the odometer will show "0" (Fig. 5). Drive the vehicle) through the measured mile (speed is not important). As you move, the odometer will begin showing the speedometer pulses as they are being calculated.

At the end of the mile, stop and press the pushbutton again. The odometer will now display the number of speedometer pulses that were registered over the distance. (Note: if the number displayed is 12,800, your stock speedometer sensor does not put out a pulse per mile count between 2,000 and 32,000. If the number displayed is 8,000, the default setting, the pulses per mile were not recorded and you must repeat steps 2-4.) The odometer will continue to display the pulse reading for a few seconds. Once it reverts to the default mode (Fig. 1), you have calibrated the speedometer.

Trip Distance

A single press of the recall button will activate the trip meter in the odometer display. A decimal point will appear to indicate that you are in trip meter mode. Holding the recall button down for 3 seconds will clear the trip distance. To return to the default odometer display, press the recall button again. The decimal point will disappear to indicate that you are back in the default odometer display.

Recording and Viewing Performance Data

Follow these steps to record and recall Performance Data (high speed, ¼ mile ET and 0-60 time):

1. Before each run your car must be at a complete stop at the starting position. Press and hold the pushbutton as it cycles through the performance data. At the end, the odometer will say "RESET" and all performance data will be cleared from memory. This will not affect your stored calibration value or the odometer reading.
2. Now press the pushbutton until "HI-SP" is displayed (Fig. 2). On its own, the gauge will cycle through the performance data that it records in the following order "0-60", "1/4", "CAL" (Figs. 2-5).
3. Start the run, pass, session, etc.
4. When finished, repeat Step 2 to view the data gathered from this run. While stopped, you can view this data as many times as you wish. However, once it finishes scrolling one time, the memory is ready to record new data for the ¼ mile and 0-60 mph times and will begin recording again once the vehicle starts moving. The highest speed measured over multiple runs will be retained in memory.

If you have any further questions, please call us on (714) 991-9999 and ask for Technical Support. Our business hours are 9 am to 5 pm PST.

Thank You,

NORDSKOG PERFORMANCE PRODUCTS

LIMITED WARRANTY

Nordskog Performance Products warrants all Nordskog Instruments to be free from defects in materials and workmanship under normal use and service from the original date of purchase for the following time periods:

Digital Gauges with LED displays – Lifetime
All other gauges – Three (3) years
Sending Units – One (1) year
Accessories – One (1) year

This warranty is applicable only to the original purchaser and any returns for repair must be accompanied by an original sales invoice or receipt.

This warranty does not apply to the appearance of the product or an exterior that has been damaged. It also does not apply to a product subjected to misuse, abnormal service or handling, or which has been altered or modified in design, construction or function. In these situations, Nordskog Performance Products may charge a diagnostic fee and/or a repair fee.

If a Nordskog Instrument is considered defective, Nordskog Performance Products will either repair or replace the defective product, at its discretion.

Return procedures:

1. Call Nordskog Performance Products Technical Support (714-991-9999) to discuss and potentially solve the issue. If the issue remains unsolved, Nordskog Performance Products will issue a Returned Materials Authorization (RMA) number.
2. Using the RMA number to identify the package and including a description of the issue, return the instrument to:

Nordskog Performance Products
Technical Service Department
RMA # (enter number provided)
1401 East Ball Road
Anaheim, CA 92805

3. Nordskog Performance Products will test the instrument and, at their discretion, repair or replace a defective item.
4. Nordskog Performance Products will return the instrument to the customer. In all cases, whether defects are found or not, shipping charges are the responsibility of the customer.

Correction of defects, in the manner and for the period of time defined herein, shall constitute complete fulfillment of all liabilities and responsibilities of Nordskog Performance Products to the purchaser with respect to the product. In no event shall Nordskog Performance Products be liable, or in any way responsible, for any incidental or consequential economic or property damage. Some states do not allow the exclusion of incidental or consequential damages, so the above exclusion may not apply to you. This warranty gives you specific legal rights. You may also have other rights that vary from state to state.